

SBA Disaster Recovery Centers continued:

Union County

Kean University — SBDC, Business One-Stop Service — The Incubator, 320 Park Ave., Plainfield, NJ 07060

HOURS: Mon-Fri 9:00 a.m. to 5:00 p.m.

Renters, homeowners and businesses that do not need one-on-one assistance do not need to visit a center. They can apply for an SBA disaster loan online using the Electronic Loan Application (ELA) via SBA’s secure website at disasterloan.sba.gov/ela

RESOURCES

- Information is available 24 hours a day by phone or 711/VRS at **800-621-FEMA (3362)**, TTY **1-800-462-7585** or by visiting DisasterAssistance.gov.
- **Red Cross** call center at **800-RED-CROSS (800-733-2767)**.
- **New Jersey residents can visit nj211.org/hurricane.cfm or call 211** to find information about clean-up resources and local recovery efforts.
- **New Jersey Disaster Distress Line** for those in need. Survivors can call at **1-877-294-4357** or TTY:**1-877-294-4356**.
- For county D-SNAP locations, hours of operation and other important enrollment information, go to njsnap.org. These locations are different from DRCs.
- FEMA Housing Portal asd.fema.gov/inter/hportal/home.htm assists survivors in finding available rental units in New Jersey

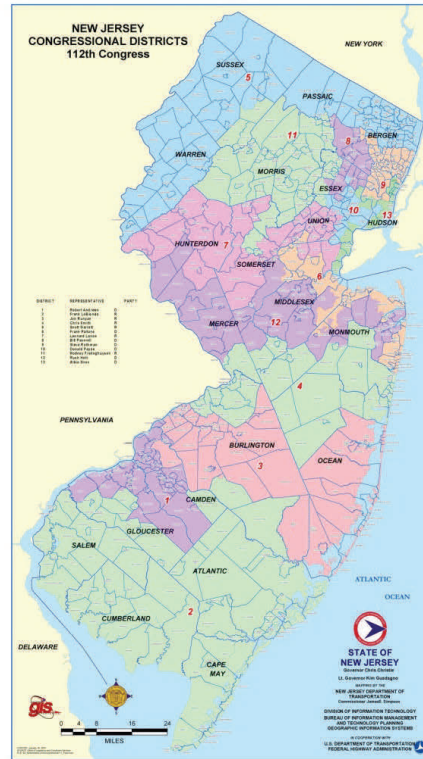
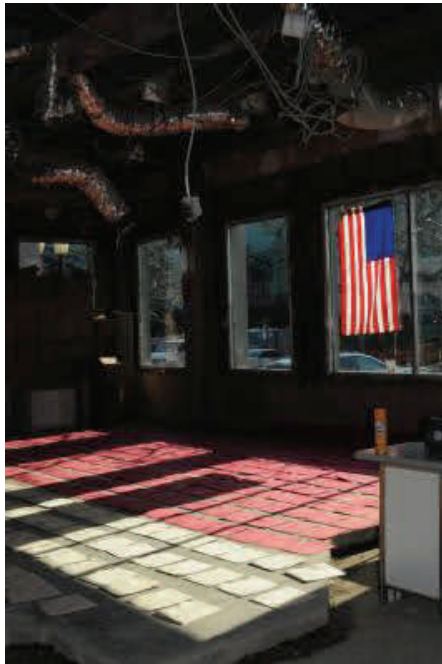
Social Media Links:

- **FEMA smartphone app:** fema.gov/smartphone-app
- **FEMA website for Sandy:** fema.gov/Sandy
- **Blog:** fema.gov/blog
- **Facebook:** facebook.com/fema
- **Twitter:** twitter.com/fema, #SandyNJ, #SandyVolunteer, #SandyAid, #Sandy
- **Videos:** www.youtube.com/fema

Photo of the Day:

Hoboken, N.J., Nov. 23, 2012
Wet patient records are laid out to dry in this waterfront medical center which experienced extensive damage during Hurricane Sandy. FEMA is working with state and local officials to help individuals and communities recover from this record breaking storm.

George Armstrong/FEMA




**DAILY UPDATE
DR-4086
New Jersey**

Thursday, Nov. 29, 2012

Message of the Day:

NEW JERSEY RECOVERY SPEEDING AHEAD ON ONE MONTH ANNIVERSARY

All 107 shelters opened in the aftermath of Sandy are now closed. Over \$263 million in Individual Assistance funds have been dispersed to more than 49,000 New Jersey disaster survivors.

News Desk: 877-434-4084

DISASTER FACTS

Data as of Close of Business 11/28/12

IA Registrations approved	49,077
IA funds disbursed	\$263 million
33 DRCs—Total visits	24,290
TSA Program individuals in hotels/motels	2,514
Home inspections completed	100,331
SBA loan dollars approved (home)	\$19.8 million
SBA loan dollars approved (business)	\$1.2 million



Department of Homeland Security Federal Emergency Management Agency

FEMA Support for Hurricane Sandy Recovery

DR-4086-NJ | 11/28/2012

CURRENT ACTIVITIES

Key Messages:

One Month Anniversary Accomplishments

- Led by Governor Christie, the State of New Jersey, FEMA, and scores of other federal agencies, hundreds of volunteer and faith-based organizations forged a partnership to help hurricane-struck communities throughout the state. One month later, recovery is well underway.
- More than 100,000 homes were damaged by the storm. Today:
 - More than 99,000 homes have been inspected.
 - More than 49,000 applicants have been approved for aid.
 - More than \$263 million has been disbursed to survivors.
- Right after the hurricane, 107 shelters were open with 4,370 people. Today:
 - All the shelters are closed.
 - Nearly 3,000 households are staying in motels and hotels under Transitional Sheltering Assistance.

FEMA Extends Emergency Shelter Program Until December 13

- An emergency sheltering program run by the Federal Emergency Management Agency has been extended to assist more displaced Hurricane Sandy survivors into December.



- At the request of the State of New Jersey, the Transitional Sheltering Assistance (TSA) program has been extended for two weeks. The last hotel stay covered by the program will be the night of Dec. 12. The program will end with checkout on Dec. 13.

- TSA is an emergency sheltering program. Survivors are encouraged to move into temporary rental

or permanent housing as soon as possible. FEMA is working with TSA recipients, along with federal and state partners, to provide housing options as the program expires.

- As of Nov. 28, there were 2,824 survivors in the TSA program.

U.S. SMALL BUSINESS ADMINISTRATION BUSINESS DISASTER RECOVERY CENTERS

Atlantic County

Richard Stockton College,
Small Business Development Center,
35 South Martin Luther King Blvd.,
Atlantic City, NJ 08401
HOURS: Mon-Fri 8:30 a.m. to 4:30 p.m.

Bergen County

Bergen Community College,
Small Business Development Center,
355 Main St., Rm 121,
Hackensack, NJ 07601
HOURS: Mon-Fri 9:00 a.m. to 5:00 p.m.



Cape May County

Cape May County Chamber of Commerce 13 Crest Haven Rd., Cape May, NJ 08210
HOURS: Mon-Fri 8:30 a.m. to 4:30 p.m.

Essex County

Rutgers University, Small Business Development Center, 25 James St., Newark, NJ 07102
HOURS: Mon-Fri 9:00 a.m. to 5:00 p.m.

Hudson County

Small Business Development Center, New Jersey City University, 285 West Side Ave.,
Suites 189-191, Jersey City, NJ 07305
HOURS: Mon-Fri 9:00 a.m. to 5:00 p.m.

Middlesex County

John F. Kennedy Library, 500 Hoes Lane, Piscataway, NJ 08854
HOURS: Mon-Sat. 10:00 a.m. to 5:00 p.m.
Sunday 1:00 p.m. to 5:00 p.m.

Monmouth County

Brookdale Community College, 765 Newman Springs Rd., Bankier Library, Rm. 246 (SBDC),
Lincroft, NJ 07738
HOURS: Mon-Fri 9:00 a.m. to 5:00 p.m.

Ocean County

Southern Ocean County Chamber of Commerce, Stafford Heritage Park Train Station (Across
from Manahawkin Lake Between RT 9 and RT 72), West Bay Ave., Manahawkin, NJ 08050
HOURS: Mon-Sun 10:00 a.m. to 6:00 p.m.

Passaic County

William Paterson University, Small Business Development Center, 131 Ellison St.,
Paterson, NJ 07505
HOURS: Mon-Fri 9:00 a.m. to 5:00 p.m.

SBA Disaster Recovery Centers continued:

FEMA PARTNER AGENCIES

- **U.S. Army Corps of Engineers:** Providing essential support in several areas including: 43 USACE employees remaining to support the New Jersey Recovery Office and participating in debris and temporary housing task forces.
- **U.S. Department of Housing and Urban Development:** Several measures are being taken to expedite housing solutions for Hurricane Sandy survivors, including:
 - Waivers to program regulations involving impacted families and communities.
 - Expediting the release of insurance proceeds to homeowners to begin the rebuilding process.
 - Granting a 90-day moratorium on foreclosures and forbearance on foreclosures of FHA-insured mortgages.
- **The Department of Health and Human Services:** Behavioral health professionals from the U.S. Public Health Service Commissioned Corps **providing mental health support in shelters and for first responders.** The toll-free National Disaster Distress Helpline is **1-800-985-5990** or by texting ‘TalkWithUs’ to **66746**. Multilingual support is available.
- **Red Cross** established a call center for Hurricane Sandy at **800-RED-CROSS** (800-733-2767) for all inquiries.
- **Environmental Protection Agency (EPA)** continues to provide support with Waste Water Assessment Teams at two large wastewater treatment plants in Middlesex and Essex counties.

DISASTER ASSISTANCE RESOURCES

- Individuals and business owners who sustained losses can **apply for assistance** by registering online at DisasterAssistance.gov, web-enabled mobile device at m.fema.gov, phone or 711/VRS **1-800-621-FEMA (3362)** or TTY **1-800-462-7585**.
- **Disaster Legal Services** provided by members of the Young Lawyers Division of the New Jersey Bar Association, are available to survivors at **1-888-541-1900**.
- **Disaster Unemployment Assistance (DUA) benefits are available** for those whose jobs were impacted by the hurricane. Including people not normally eligible for unemployment benefits, such as self-employed persons and farm workers. **Registration closes Feb. 4, 2013; applicants should contact a New Jersey Reemployment Call Center.** Locations include Union City (201-601-4100), Freehold (732-761-2020), and Cumberland (856-507-2340).
- **DUA applicants** who need copies of Federal Income Tax Returns can obtain them at **IRS Tax Returns: 1-866-562-5227, Press “1” for Hurricane Sandy.**
- **D-SNAP:** The New Jersey Department of Human Services has been authorized to implement the **Disaster Supplemental Nutrition Assistance Program**, or D-SNAP, to assist residents affected by Sandy in 16 New Jersey counties by zip-code. **D-SNAP applications WILL NOT be taken at Disaster Recovery Centers.**

FEMA DISASTER RECOVERY CENTERS

Disaster survivors can receive information and answers to questions at **33 Disaster Recovery Centers**. **Nine** centers in less-impacted western counties are open on a **3-day** circuiting schedule.

DRCs are open from 9 a.m. to 7 p.m. unless otherwise noted.

Atlantic County

- Atlantic City Convention Center, 1 Convention Blvd., Room 201, Atlantic City, NJ 08401
- Hamilton Mall, 4403 Blackhorse Pike (Route 322), NJ 08330

Bergen County

Bergen County Plaza, 1 Bergen Plaza, 4th Floor, Hackensack, N.J. 07652

Burlington County: *Rotating Center*

Burlington Center Mall, 2501 Burlington-Mount Holly Rd, Ste., 215, Burlington, NJ 08016

DATES: Thurs., Nov., 29 to Sat., Dec. 1 and Mon., Dec. 10 to Wed., Dec. 12

Cape May County

- Cape May Courthouse Public Library, 30 Mechanics St, Cape May, N.J. 08226
- Ocean City Community Center, 1735 Simpson Ave., Ocean City, N.J. 08210

Cumberland County: *Rotating Center*

Emergency Management Office, 637 Bridgeton Ave., Bridgeton, N.J. 08302

DATES: Mon., Nov. 26 to Wed., Nov. 28 and Thurs., Dec. 6 to Sat., Dec. 8

Essex County

Willing Heart Community Care Center, 555 Dr. Martin Luther King Blvd., Newark, NJ 07103

Gloucester County: *Rotating Center*

Government Services Building, 1200 N. Delsea Dr., Clayton, NJ 08312

DATES: Thurs., Nov., 29 to Sat., Dec. 1 and Mon., Dec. 10 to Wed., Dec. 12

Hudson County

- Adjacent to Office Depot, 59 Washington St., Hoboken, NJ 07030
- Jersey City Museum, 350 Montgomery St., Jersey City, NJ 07302

Mercer County: *Rotating Center*

Mercer County Community College, 1200 Old Trenton Rd., West Windsor, NJ 08550

DATES: Mon., Nov. 26 to Wed., Nov. 28 and Thurs., Dec. 6 to Sat., Dec. 8

Middlesex County

Sayreville Senior Center, 423 Main St., Sayreville, NJ 08872

Monmouth County

- Belmar Municipal Bldg., 601 Main St., Belmar, NJ 07719
- Henry Hudson Trail Activity Center, 945 Hwy. 36, Leonardo, NJ 07737
- Long Branch Fire Station #4, 199-205 Union Ave., Long Branch, NJ 07740
- Union Beach Municipal Building, 650 Poole Ave., Union Beach, NJ 07735

Morris County: Rotating Center

Morris Plains Community Center, 51 Jim Fear Dr., Morris Plains, NJ 07950

DATES: Mon., Nov. 26 to Wed., Nov. 28 and Thurs., Dec. 6 to Sat., Dec. 8

Ocean County

Bay Head Fire Station #1, 81 Bridge Ave., Bay Head, NJ 08742

HOURS: 8 a.m. to 5 p.m. until further notice

Ocean County

- Bell Crest Plaza Store Front 4C, 953 Fischer Blvd., Toms River, NJ 08753
- Brick Township Civic Center, 270 Chambers Bridge Rd., Brick, NJ 08723
- Harvey Cedars Bible Conference Center, 12 Cedars Ave., Harvey Cedars, NJ 08008
- Little Egg Harbor Senior Center, 641 Radio Rd., Little Egg Harbor Township, NJ 08087
- Old Township Bldg., 775 East Bay Ave., Stafford, NJ 08050

Passaic County

Passaic County Department of Health, 317 Pennsylvania Ave., Paterson, NJ 07503

Salem County: Rotating Center

Penns Grove EMS Bldg., 25 East Griffin St., Penns Grove, NJ 08069

DATES: Mon., Dec. 3 to Wed., Dec. 5 and Thurs., Dec. 13 to Sat., Dec. 15

Somerset County: Rotating Center

Somerset County Human Services, 27 Warren St., Somerville, NJ 08876

DATES: Mon., Dec. 3 to Wed., Dec. 5 and Thurs., Dec. 13 to Sat., Dec. 15

Sussex County: Rotating Center

Sussex County Community College, 1 College Hill Rd., Newton, NJ 07860

DATES: Mon., Dec. 3 to Wed., Dec. 5 and Thurs., Dec. 13 to Sat., Dec. 15

Union County

- Chisholm School Community Center, 100 S. Springfield Ave., Springfield, NJ 07081
(scheduled to close 12/1/12)
- Plainfield Senior Citizen's Service Center, 400 East Front St., Plainfield, NJ 07060

Warren County: Rotating Center

Franklin Township Municipal Bldg., 2093 Rt. 57, Broadway, NJ 08808

DATES: Thurs., Nov. 29 to Sat., Dec. 1 and Mon., Dec. 10 to Wed., Dec. 12

DRC locations change frequently. The closest open offices can be found online at <http://asd.fema.gov/inter/locator/home.htm>. An alternative is to go to www.fema.gov and search for DRC locator.

SBA customer service representatives are available for one-on-one consultation with business owners who are seeking assistance for business losses caused by Hurricane Sandy.

- FEMA will be contacting all survivors who are eligible for the TSA program to tell them about the extension.
- Disaster survivors who received housing assistance before Nov. 14 may be able continue in the TSA program with the best available data after major storm events. They paint a more current picture of flood risk to communities.



Advisory Base Flood Elevations

- Advisory Base Flood Elevations depict advisory coastal flood hazard elevations and provide guidance for communities to rebuild and recover in ways that will make them more resilient to future storms.
- FEMA creates Advisory Base Flood Elevations to provide communities with the best available data after major storm events. They depict a more current picture of flood risk to communities.
- FEMA has advisory flood risk products for some areas in New Jersey and New York affected by Sandy that can serve as guides to understanding post-storm coastal flood hazard conditions and the higher elevations that communities should build to in order to protect themselves from similar events in the future.
- FEMA will assist communities in applying the Advisory Base Flood Elevations as they evaluate their risk during the long term recovery and rebuilding phase.

Recovery Coordination

- The inaugural meeting of the **Federal Disaster Recovery Coordination (FDRC)** strategic planning group set three priorities to help New Jersey municipalities recover from Hurricane Sandy:
 - Identify the current and anticipated recovery issues.
 - Identify resource gaps.
 - Identify which New Jersey jurisdictions may require enhanced Federal long term community recovery assistance.